

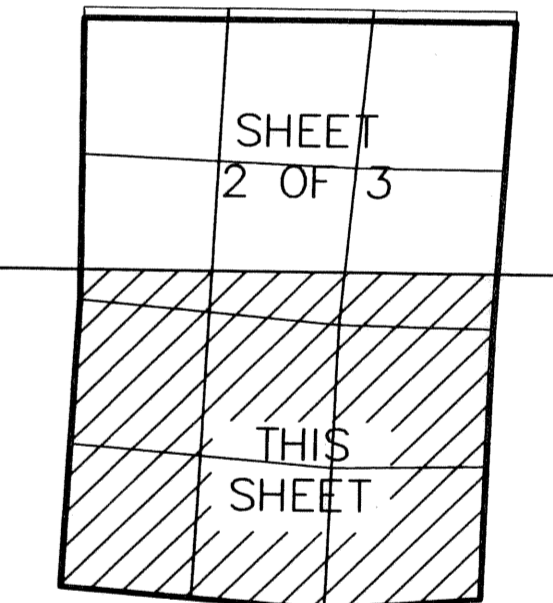
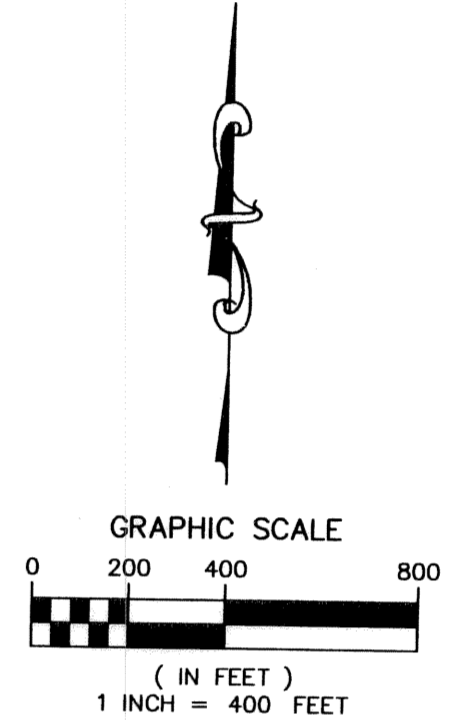
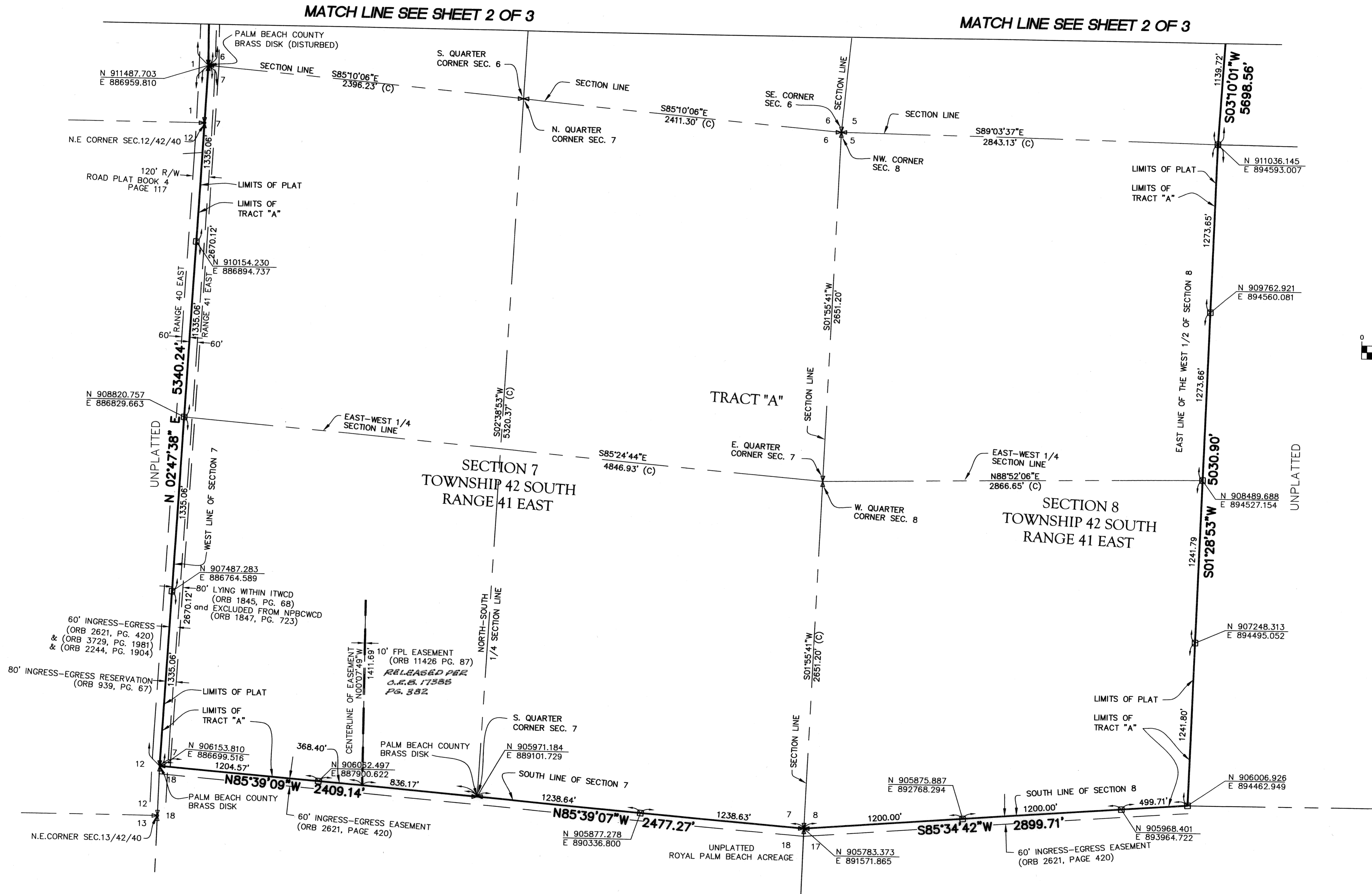
# PALM BEACH COUNTY BIOTECHNOLOGY RESEARCH PARK

PORTION OF THE WEST ONE-HALF (W 1/2) OF SECTION 5, PORTION OF SECTION 6 ALL OF SECTION 7 AND THE WEST ONE-HALF (W 1/2) SECTION 8 TOWNSHIP 42 SOUTH, RANGE 41 EAST, PALM BEACH COUNTY, FLORIDA.

JULY 2004

SHEET 3 OF 3

110



MAP SHEET INDEX  
N.T.S.

- LEGEND:**
- FPL = FLORIDA POWER AND LIGHT
  - INC = INCORPORATED
  - ITWCD = INDIAN TRAILS WATER CONTROL DISTRICT
  - = DENOTES PERMANENT REFERENCE MONUMENT
  - LB 6680 (UNLESS OTHERWISE NOTED)
  - NPBCWCD = NORTHERN PALM BEACH COUNTY WATER CONTROL DISTRICT
  - ORB = OFFICIAL RECORD BOOK
  - PB = PLAT BOOK
  - PBC = PALM BEACH COUNTY
  - R/W = RIGHT-OF-WAY
  - RPB = ROAD PLAT BOOK
  - SFWM = SOUTH FLORIDA WATER MANAGEMENT DISTRICT
  - SEC. = SECTION
  - NPBCID = NORTHERN PALM BEACH COUNTY IMPROVEMENT DISTRICT

SUBDIVISION Palm Beach County Biotech Research Park

BOOK 102  
PAGE 102  
FLOOD MAP # 150 B  
ZONING AR  
SE  
TAZ 024  
PUD NAME

Engineers Planners  
Land Surveyors  
Environmental  
Professionals License  
Business No. 6680

**MILLER LEGG**  
ASSOCIATES, INC.

2005 Vista Parkway  
Suite 100  
West Palm Beach  
Florida 33411-2719  
(561) 689-1138  
Fax: (561) 689-8108